



Jobs in the Murraylands

‘Time Tracker’ 2009-2011

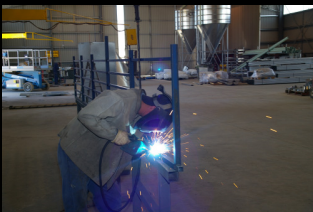
Proudly developed
by



SouthAustraliaWorks
linking people, skills and jobs



Australian Government
Department of Employment and
Workplace Relations



CONTENTS

Jobs, and business growth	Pg. 3
Which industries will grow?	Pg. 4
Investment by Industry	Pg. 5
Break down of Job Growth by Council Region	Pg. 6
Investment by industry	Pg.7
Facts about labour in the Murraylands	Pg. 8
Occupations in demand	Pg. 9
Facts	Pg. 10
What can we do?	Pg.11

Please feel free to contact the Murraylands Regional Development Board for more information.

Regional Development Australia Murraylands & Riverland

137 Adelaide Road

PO Box 134 Murray Bridge SA 5253

Phone: 08 8535 7170

Fax: 08 8532 6957

Website: www.rdamurraylands.org.au

Jobs and Business Growth

The Time Tracker document is based on the **Jobs & Investment** survey , completed by local businesses and was done on a confidential basis by completing a questionnaire throughout August and September 2009.

Business within the Murraylands region is driving strong jobs growth and investment.

Despite the drought, water restrictions, an unfavourable global economy and the threat of climate change, considerable growth is forecast. Given the scenario of three average years, Murraylands businesses expect an increase of 3,011 new positions (of which 1,866 will be full time) by the end of 2011.

Intensive construction projects entering the Murraylands as well as local expansions consequently leads to capital investment predictions higher than that of 2006. In the most likely scenario, capital investment in the order of \$1,442,102,500 is anticipated by the end of 2011.

The Murraylands consists of less than 4,000 businesses, and as with many rural areas, the great majority of them are small.

Growth would not have been predicted for Agriculture if we did not include intensive animal and fodder production and some aspects of horticulture. Expansions and incoming projects in these categories are responsible for increasing the investment levels expected for Agriculture in the Coorong.

By contrast, the retail industry will expect to invest almost 4.5 million dollars more than it did in the previous three years, which will expend investments mostly on refurbishing and improving existing businesses.

An outstanding trend in the Murraylands, is that employment growth expectations have mainly been centred in the manufacturing and (consequentially) the retail sectors. The manufacturing category includes value-adding as well as water, gas and electricity, and therefore encompasses functions such as meat processing,

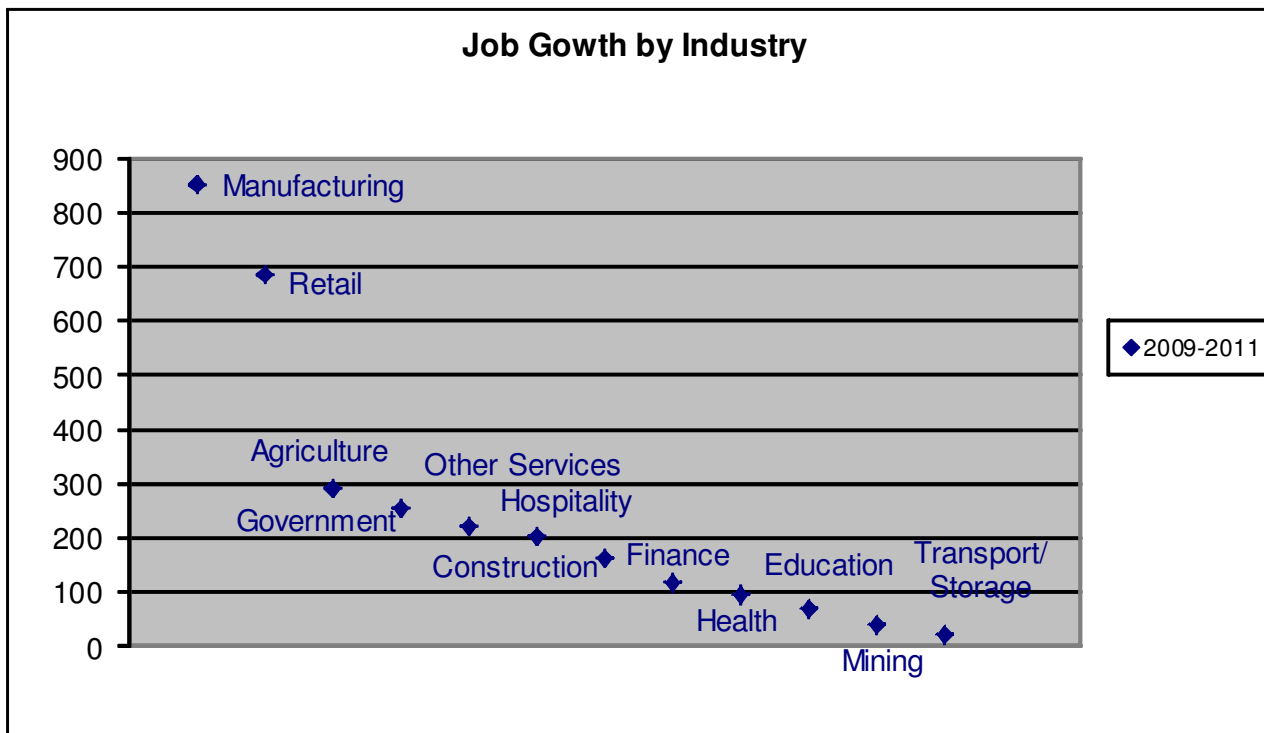
Which industries will grow?

Using the information collected in the **Murraylands Jobs and Investment Survey** for 2008-2011 you can work out which industry sectors are going to create the most jobs in the next three years.

The Current survey shows that the Murraylands' business owners and managers expect that the Region as a whole will grow by 3,011 positions in the three years to the end of 2011. 1,145 of these will be part time, and 1,866 will be full time. These predictions are for "average years". Three consecutive good years could raise it to 4,133, and three bad years could lower it to 1,151. While the Coorong LGA will lose some staffing positions if this latter possibility occurs, employment growth will still be experienced across the rest of the Region.

The following graph show the predicted **Job Growth** between 2009 -2011

3011 Jobs

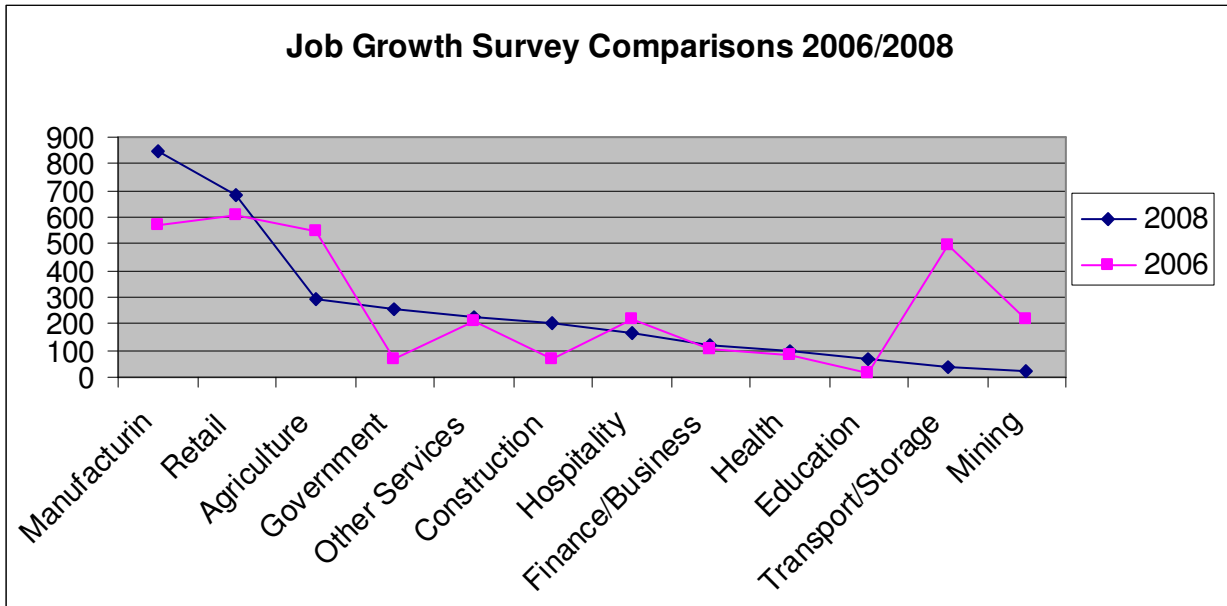


As the year progresses we will develop a graph which will indicated the time spans of project developing and the number of skill required!

specific Skills hard to find" includes -

Nurses, Doctors, Teachers (especially Maths/Science), Technicians, Chefs, Accountants, Environmental Consultants, qualified Child Care workers, quality graduates in the Agricultural Sciences, and people with skills and experience in irrigation.

The following graph is a comparison of job growth between the survey conducted in 2006 and the recent 2008 survey



The following Industries are expected to experience strong growth-

Manufacturing

Food/meat processing (beef, mutton and pork); Intensive agriculture/horticulture

Housing

Strong housing growth proposed which will last for at least the next decade

Retail

South Tce; Whitegoods/bulky goods; Bunnings; Centro properties; Mannum shopping centre and speciality stores

Professional services

Tax planners; Accountants Architects; Project managers

Energy production

Solar; Biofuels, Ethanol; Liquefied gas

Manufacturing

Components and foundry

Engineering

Particularly through collaboration and in response to mining and defence opportunities

Transport

Growing pressure to move goods in/out of region Monarto intermodal road/rail airport Tailem Bend intermodal/grains precinct re-development Regional airfield re-development

Distribution

Big W increase in jobs

Monarto intermodal development will encourage further development

Racing Precinct - development

Housing 3,500 allotment development Racetrack and training Associated industry support; Racetrack and Training; Associated Industry Support

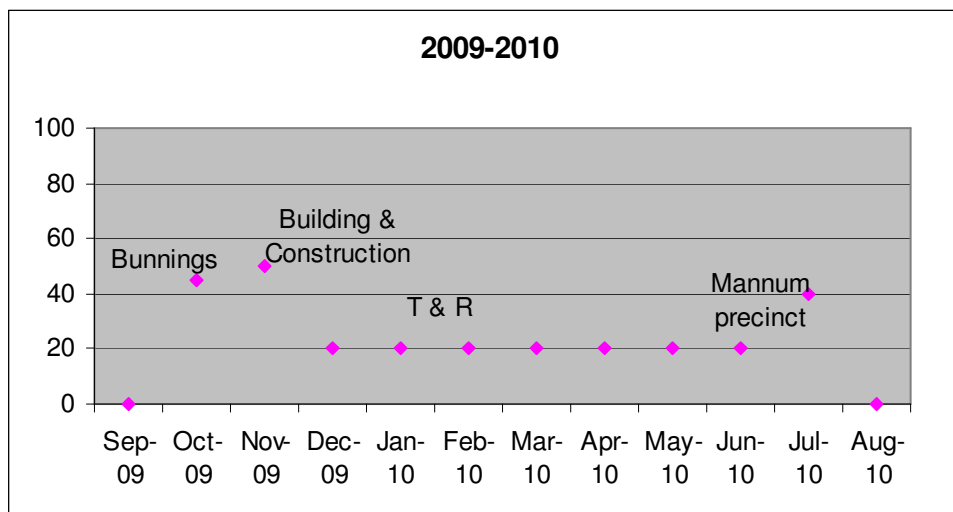
Source: Murraylands Regional Development Board and Industry

Breakdown of Job Growth by Council Region

So, are you getting the picture?

The following table is a breakdown of the last three Jobs & Investment surveys conducted by the Murraylands Regional Development board.

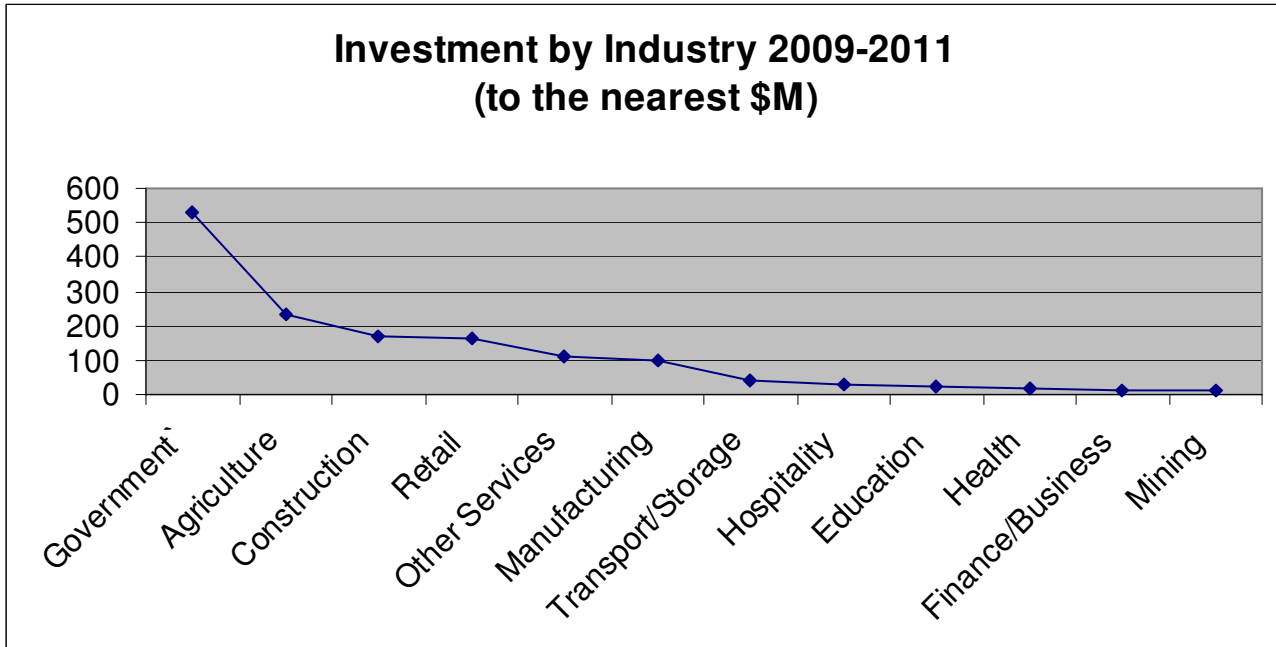
Recent surveys breakdowns by Council Region of predicted Employment Growth							
Period	Survey	Region	RCMB	MMDC	CDC	KEMC	SMDC
2006-2008	Murraylands Jobs & Investment Survey 2006	3,326	2,191	579	399	78	21
2006-2008	Murraylands Growth Update 2007	2,597	1,700	420	290	-	-
2009-2011	Murraylands Growth Forecast 2009 - 2011	3,011	2,317	311	299	94	60



Future Developments

- T & R Food processing will be extending their manufacturing with additional cool rooms
- The Murray Bridge Race Course development will commence in the next two years which will require up to up to 600 workers.
- White goods warehouse
- South Terrace Retail Precinct
- Mannum Retail Precinct
- Education Precinct
- Monarto Intermodal Transpot Hub.
- Housing Construction

Investments by Industry in the Region



The anticipated investment levels have been calculated for three different scenarios. In the first scenario, investments in Murraylands businesses planned for the three years to the end of 2011 are taken to eventuate providing their investors rated them as “very likely” or “quite likely”. In this case, investment in the order of \$1,442,102,500 will occur. This is taken to be the most probable of the three scenarios.

The second scenario could apply if conditions are significantly worse than expected, in which case only the “very likely” investments eventuate and the figure for the Region falls to \$1,139,947,500. However, if conditions are sufficiently improved for scenario three to occur and all planned investments take place (including those rated as “just possible”), the figure for the Region rises to \$1,819,872,500.

At first sight, the high level of investment for agriculture appears surprising for a time of uncertainty and water restrictions. However, most of the expenditure is for agricultural businesses which are not primarily reliant upon Murray water.

Higher investments expected in Retail mostly relate to major retail projects planned for the survey period. These will mostly affect the Murray Bridge and Mid Murray LGAs.

Source: Murraylands Jobs and Investment Survey 2006-2008; Murraylands Regional Development Board and Industry

Competition

Australia Job Market

The current labour market is diverse due to drought and the financial global economic crisis. However Australia is also entering a phase of accelerated population ageing.

In view of the ageing population coupled with strong industry development, Australia's labour market will have a shortfall of 195,000 workers over the next five years.

- South Australia is facing a shortage of 13,000 workers over the next five years.
- The Murraylands is facing a shortage of 590 over the next five years.

In the past decade employment growth has been dominated by a handful of service industries and this pattern is expected to continue in the next few years with the following industries.

The following Industries-

- Property and business services
- Health and community Services
- Retail Trade
- Construction
- Accommodation
- Hospitality Industry

South Australia

- BHP's Olympic Dam
- Iluka Resources
- Strathalbyn – Terramin Australia's Mine
- Army battalion

Employment growth over the past ten years has been strongest for professionals, but strong growth has also been evident for less-skilled service-oriented jobs.

Overall shortages are apparent for most trades, but also point to broader recruitment problems in regional areas.

Source Workforce Tomorrow adapting to a diverse labour market 2006- Department of Employment & Workplace Relationship

Occupations in Demand

As an employer in the Murraylands it will become more and more important that you are able to offer competitive salaries and conditions. It may help you to understand those occupations that are going to be most in demand.

The following lists detail the occupations most in demand in the Murraylands, the State and Australia.

Murraylands

Skills in demand in The Murraylands include:

Motor Mechanic & Assistant, Clerical Administration, Driver Fork Lift, Driver Truck, Engineering Trades Assistant, Child Care, Nurse, Machine Operator, undefined, Building Trades person, Earth moving Plant Operator, Shed Hand, Farm Hand, Welder, Store Person, Sales Person.

Source: Murraylands Jobs & Investment Survey, Murraylands Regional Development Board

South Australia

Skills in demand in South Australia include:

Child care, Engineers, Accountants, Health Specialists, Secondary Teachers, Automotive Trades, Electrical Trades, Construction Trades, Food Trades & Other Trades (including Hairdressing, Cabinet Making).

Source: Skills in Demand Lists – States and Territories -2006 Dept of Employment and Workplace Relations.

Australia

National skill shortages include:

Child Care, Engineers, Accountants, Registered Nurses, Enrolled Nurses, Health Specialists, Engineering Trades, Vehicle Trades, Electrical/Electronic Trades, Construction Trades, Food Trades & Wood Trades.

Source: Australian Jobs 2005 Skill Shortages, Dept of Employment and Workplace Relations.

Unemployment Rates as at March 2010

		Mar-10	
	Unemployed	Labour Force	Rate
Coorong	168	3174	5.3
Mid Murray	220	4128	5.3
Karoonda East Murray	18	691	2.6
Rural City of Murray Bridge	774	9242	8.4
Southern Mallee	38	1336	2.8
REGION	1218	18571	6.6%
STATE AVERAGE	44,800	841,400	5.3%

FACTS

- The known labour force in the region is 18,571.
- Murraylands Regional Unemployment Rate is 6.6%
This means that there are **1218** people registered as looking for work.

Sources:

Department of Education, Employment and Workplace Relations
Small Area Labour Markets 2010

What can you do?

Job prospects in the Murraylands remain good despite the region being affected by drought and the Global economic downturn.

As the predicted jobs happen, and happen when we think, employers locally continue to struggle to recruit skilled and unskilled labour.

In preparation for the looming jobs crisis, the **RDA** has worked to develop a number of solutions. Get yourself familiar with the support that is available and prepare for it sooner rather than later.

Some of the specific ways that the **RDA** can help you are:

Career Development Centre

- This centre supports local people to enhance their skills and capabilities and secure sustainable employment that meets their career inspirations. The work of the CDS will result in increased participation in emerging job opportunities. The CDC also assists in workforce development in the region and align job training with enterprise development.

Jobs Without Water

- The project will identify at risk job seekers who may lose employment due to the drought conditions or may be seeking employment without significant work references (e.g. previously self employed) and assist them to find alternate work in the region, therefore retaining their skills within the region.

Industry specific Training

- Industry specific training is training provided for those industries which identify they will have a growth in jobs, where there are likely to be labour shortages and where job skills training will increase the employability of the SA Works target groups.

Strengthen Work Experience (MEE Estate)

- This will be in partnership with a sponsor/s that will source vacancies and case manage work experience placements. The project will engage industry in the process and provide personal mentoring support for participants.

Ticket for Training Program

- This funding is available for individuals who can demonstrate a specific employment or training need that requires an immediate one-off response. It will need to be linked to evidence of an employment outcome but is a flexible initiative.

Skilled Migration Program

The Skilled Migration Program supports employers to access new employees from international locations to address targeted skill shortages.

What can you do?

Don't give up! There are also many other simple ways that you can find the right person for the job and you can do this yourself. These include:

- Consider splitting a job into two part time roles
- Employ return to work parents who can work school hours
- Outsource work to agencies or subcontractors

Some of the other agencies that can help you are:

Workskil

Ph: 08 8531 9800

Fax: 08 8532 4466

Bridge Street

Murray Bridge SA 5253

www.workskil.com.au

MADEC

Ph: 08 8531 3520

Fax: 08 8531 3950

8-12 Bridge Street

Murray Bridge SA 5253

www.madec.edu.au

Skilled

Ph: 08 8307 1000

70 Main South Rd

Reynella SA 5161

www.skilled.com.au

Murraylands Training & Employment

Ph: 08 8531 1733

Fax: 08 85310 474

6 Seventh Street

Murray Bridge SA 5253

<http://grouptraining.ntis.gov.au>

Statewide

Ph: 08 8531 0899

Fax: 08 8531 2647

Beatty Tce

Murray Bridge SA 5253

www.statewidegrouptraining.com.au

AICA

Ph: 08 8531 3700

Fax: 08 8531 3711

Shop 5 / 20 Bridge Street

Murray Bridge SA 5253

www.independentcontractors.com.au

More information?

1. Contact the Regional Development Board Australia Murraylands & Riverland on 08 8535 7170.
2. Go to the Murraylands website http://www.murraylands.org.au/plans_time_tracker.html to download Time Tracker document for monthly updates
3. a full copy of the Murraylands Jobs and Investment Survey 2009-2012
4. Download regular updates of this 'Jobs in the Murraylands' guide from the the following Website: <http://www.rdamurraylands.org.au>